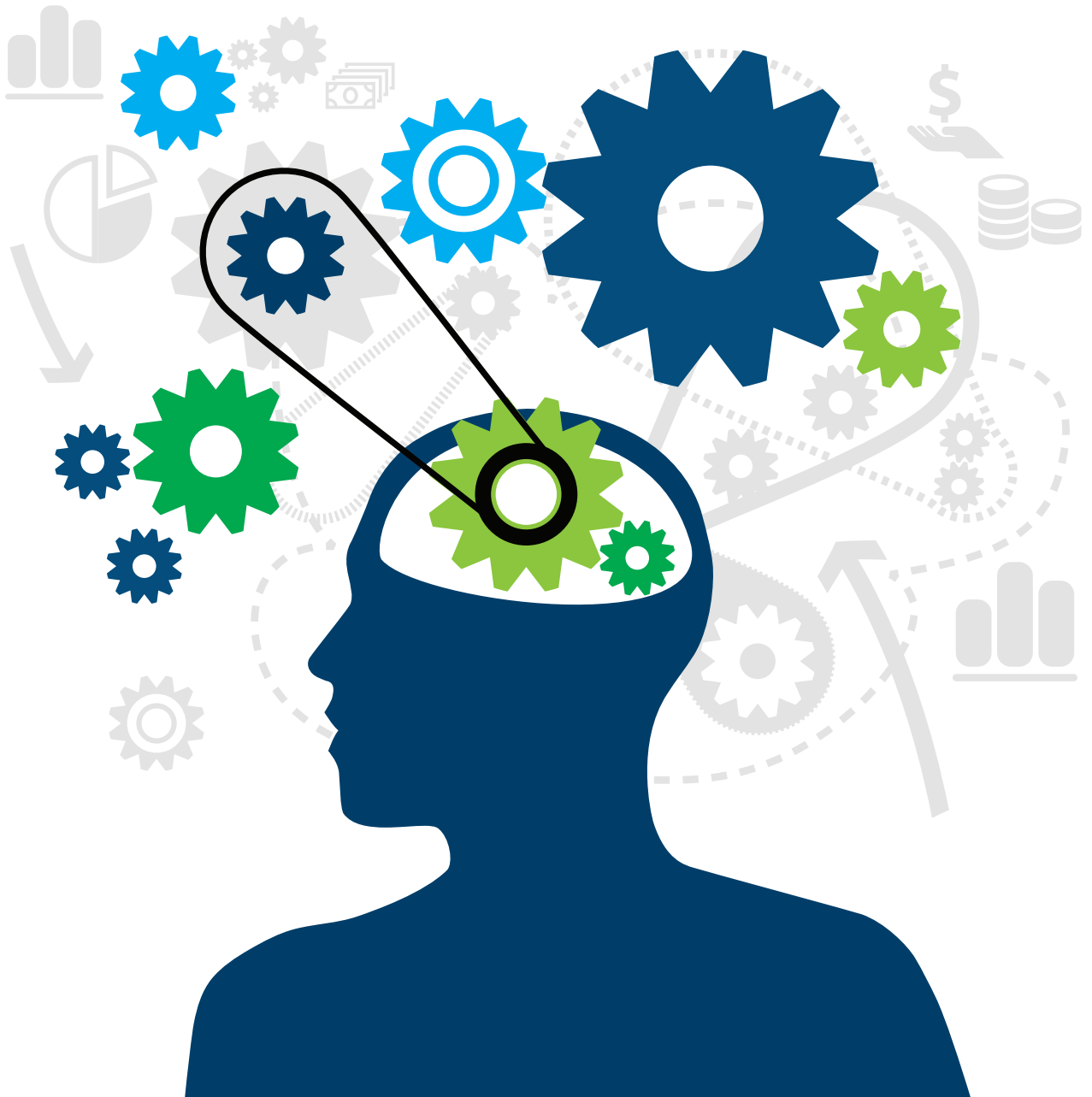


CM WebClient for CA Plex Fundamentals



CM First provides the CM WebClient for CA Plex Fundamentals class to introduce students to the browser-based deployment of CA Plex applications using CM WebClient. Students will receive the basics about web development and deployment as well as an understanding of how to create their own Ajax-based web applications using CM WebClient. Hands-on instruction ensures that students will be able to fully exploit the value of CM WebClient for their CA Plex applications.

CM WebClient for CA Plex Fundamentals Outline

Day 1

- o Module 1 - Introduction to WebClient
 - Agenda
 - Overview of WebClient
 - Development Lifecycle
 - Set-up of Custom Templates
 - * Lab WCF01: Your first Ajax WebClient Application
- o Module 2 - Java Primer
 - Java Basics
 - Java Packages
 - Java Resources
- o Module 3 - Eclipse Primer
 - Eclipse Basics
 - Eclipse Projects
 - Errors, Warnings and Exceptions
 - Eclipse Resources
 - * Lab WCF02: Create and configure Eclipse Java project
- o Module 4 - Creating Java Applications with CA Plex
 - Configuration
 - Packages
 - Generating Java
 - Building Java Programs
 - The CA Plex Ant Build Tool
 - Executing a CA Plex Java Application
 - Java Debugging Techniques
 - * Lab WCF03: Generate/Build a CA Plex Application and Run With Java Swing

Day 2

- o Module 5 - Web Application Primer
 - Web Application Basics
 - * Lab WCF04: Make Stylesheet Changes to Web Application

- o Module 6 - Web Server Primer
 - Servlet Containers
 - Web Servers Within Eclipse
 - * Lab WCF05: Configure and deploy the Web Application
- o Module 7 - Subversion Overview
 - Advantages
 - Source Control
- o Module 8 - CM WebClient Overview
 - CM WebClient Benefits
 - Deployment Environment
 - CM WebClient Pattern Library
 - CM WebClient HTML Builder
- o Module 9 - CM WebClient Patterns
 - Patterns of the CM WebClient Library
 - Templates
 - * Lab WCF06: Expand the WXPCourse Application

Day 3

- o Module 10 - CM WebClient and Eclipse
 - Projects
 - Template Customizations
 - * Lab WCF07: Create and Configure a New Dynamic Web Application
- o Module 11 - CM WebClient Template Builder
 - Templating Concepts
 - Applying Control Templates
 - Template Resolution Process
 - Template Diagnostics
- o Module 12 - CM WebClient Eclipse Project
 - Overriding Control Templates
- o Module 13 - Developing CM WebClient within Eclipse
 - CM WebClient Properties
 - * Lab WCF08: Configure, deploy and run WebClient application
- o Module 14 - Basic Template Customization
 - Customize Control Templates
 - Control Parameters
 - Utilizing Existing Templates
 - New Features
 - CM WebClient Wiki
 - Regenerating Templates
 - Troubleshooting Templates
 - Useful Resources

We provide on-site, classroom, web-based, or blended training for our various products and services. For more information, contact CM First.



CM First focuses on powering business agility by providing software and services that help customers manage and modernize their enterprise applications. Founded on a mission to manage the complexity of multi-platform application projects, CM First creates innovative application development solutions. A global company, CM First is headquartered in Steinhausen, Switzerland with offices in Austin, Texas and Milan, Italy. With the support of strong global IT partners such as IBM and CA, CM First provides software and services powering development for more than 400 clients in both the private and public sectors, including banking, IT, tourism, and manufacturing. CM First is an IBM Advanced Business Partner and a CA Technologies technology partner and global reseller offering complementary tolling and services to CA customers.

www.cmfirstgroup.com

Europe Headquarters

+41 41 508 01 05

info@cmfirstgroup.com

North America Headquarters

+1-512-418-9802

infotech@cmfirstgroup.com

Italy

+39 02 00681061

infoitaly@cmfirstgroup.com

France

+33 608 504 285

infofrance@cmfirstgroup.com